



1840 SHIREWICK DR  
LAS VEGAS, NV 89117

3 BEDS · 3 BATHS · 1,972 SQUARE FEET



3      3      1,972  
BEDS      BATHS      SQUARE FEET

### Where Days Begin

Every day starts somewhere, and this home is built to make those beginnings feel easy. Morning light, quiet moments, and familiar routines all find their place here. The layout supports a natural flow that helps each day start on the right note. It's a space that feels calm before the world asks anything of you. That sense of ease lingers as the day unfolds, creating a foundation that feels steady and welcoming. There's a quiet confidence in a place that sets the tone for everything that follows. This home offers that kind of beginning, day after day.





## Where Evenings Settle In

As the day winds down, this home shifts with it. The spaces invite you to relax, and slow your pace. Soft transitions between rooms make it easy to move from one moment to the next without feeling rushed. Whether it's a quiet night in or time spent together, the atmosphere makes it easy to feel grounded. There's a sense of warmth here that encourages you to enjoy the moment. It's where the outside world fades and home takes over.





THE KITCHEN



## The Spaces Between

---

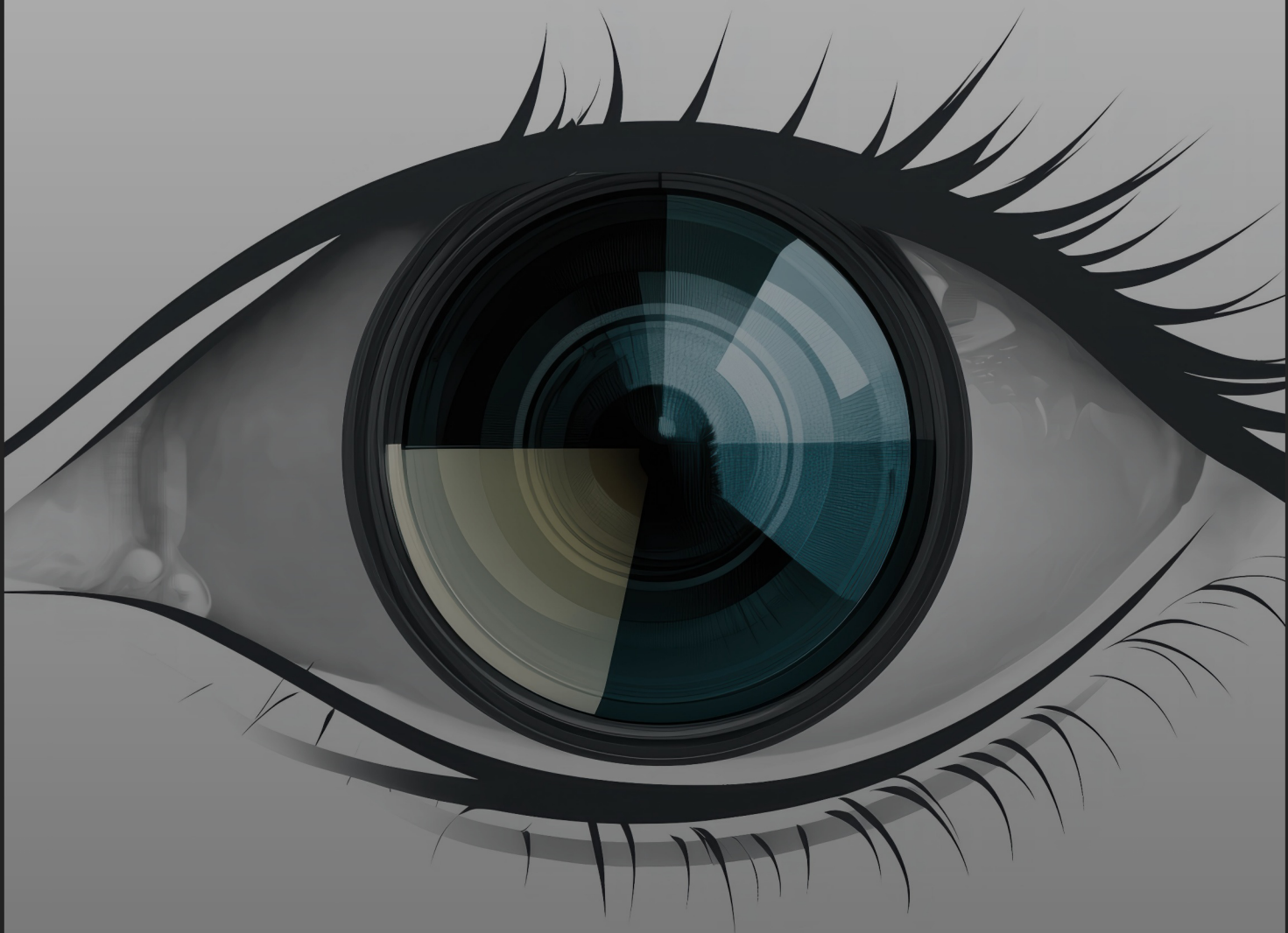
Between morning and night is where life really happens. Conversations, movement, laughter, and pauses all fill the space.

This home is designed to support those everyday moments without demanding attention. It's where the small moments come together to tell a bigger story.



# YOUR NEXT CHAPTER LIVES HERE





EYECON TOURS  
702-561-0008 ·

TOURS

